



**Term 1  
Week 5  
26 February  
2025**

**At Petersham, we work to provide a happy, safe and caring environment where children have the opportunity to become responsible and independent learners and achieve to the best of their ability.**

## Upcoming Events

### TERM 1, 2025

#### March

**Wednesday 5**—District Swimming Carnival

**Monday 10**— Sydney East Swimming Carnival

**Thursday 13**—Assembly @ 2:35pm

**Thursday 27**—Assembly @ 2:35pm

**Wednesday 12**—NAPLAN commences

**Thursday 20**—Cross Country Carnival @ Petersham Park

**Monday 31– 9 April**—Parent Teacher Interviews

#### April

**Monday 31– 9 April**—Parent Teacher Interviews

**Thursday 10**—Easter Hat Parade @ 2:30pm

**LAST DAY OF TERM 1 2025**

**FRIDAY 11 APRIL**

**FIRST DAY OF TERM 2 2025**

**WEDNESDAY 30 APRIL**

#### Office Hours

The School Office hours are 8:45am—3:30pm

# Petersham Public School

**FORTNIGHTLY NEWSLETTER**



**Address: 25 Hunter Street, Petersham 2049**

**E: [petersham-p.school@det.nsw.edu.au](mailto:petersham-p.school@det.nsw.edu.au)**

**P: 9560 9665**

## Welcome BBQ and Colour Run

We are thrilled to invite you to our annual Welcome BBQ and colour run, hosted by the P&C. The purpose of our P&C is to enrich the education, wellbeing and environment of students while creating a welcoming and supportive school community. One of the roles of the P&C is to fund-raise to support school initiatives. This year, proceeds raised will go to:

- Funding the QuickSmart maths intervention program.
- Engaging a specialist learning support officer focusing on early intervention.
- Replacing student Chromebooks and interactive boards in classrooms.

The Welcome BBQ is a chance to meet new families, have some fun and enjoy the beautiful school grounds. The school staff will be in service to you on the day, cooking the BBQ, as a thank you for all of your support. Bring your picnic blanket and we will see you there!



Check out some photos from our 2024 colour run!



## How do I register?

Scan the QR above or go to <https://www.mycause.com.au/events/petershamcolourrun>

To add your child to a class:

STEP 1 - Find your child's class and click "Join Class" on the page. Log in with your email and your child's name\*

STEP 2 - For a second or subsequent child - Go back to the main event and find your second child's class

STEP 3 - Click "Join Class" and add your additional child's name - email is not required

STEP 4 - Share the link for your child's class to friends and family for donations!

TIP - Encourage your child to earn their fundraising dollars! They can offer to help wash a car, tidy a garden, bake cookies to sell to neighbours. The options are endless! Also ensure that friends and family select 'donate' next to your child's name rather than to the entire class so that a tally of their donations are accurate to identify the winners of each class,

\*You will only need to log in one time. Logging in protects mycause and protects you, so that we know only legitimate users are accessing the event and the class pages.

Email [kat.colgan@petershampandc.org.au](mailto:kat.colgan@petershampandc.org.au) if you have any questions.

## Excellence in Wellbeing and Inclusion Body

- Why is the partnership between home and school so important?

At Petersham Public School, we firmly believe that strong collaboration between parents, carers and staff is essential for the holistic development of our students. This partnership serves as the foundation upon which we build a supportive and nurturing environment where every child can thrive academically, socially and emotionally.

The third strategic direction in our School Excellence Plan is, *Authentic Partnerships and Continuous Improvement*. We are committed to maintaining high expectations of ourself and students and delivering an outstanding education. By aligning our goals and expectations, we can create a unified approach to support student learning and growth. Together, we can set clear objectives and provide the necessary resources to help our children thrive.

- What is the Excellence in Wellbeing and Inclusion Body?

Last year, with the support and guidance of parent Conn Sheehan, teachers, PACC, students and the P&C, we established the Excellence in Wellbeing and Inclusion Body. The body was established in response to parents/carers wanting a better idea of resources to support neurodiversity and how we ensure our diverse range of learners in the community are thriving.

- What does the Excellence in Wellbeing and Inclusion Body do?

So far, we have established a parent library, hired an additional School Learning Support Officer and arranged Amy Haddadi parent workshops. In 2025 we would love to have you join the Wellbeing and Inclusion Body! We are exploring parent and child workshops, additional resources for the school (including an early intervention SLSO) and we would be thrilled to partner as we continue our commitment to excellence in Wellbeing and Inclusion.

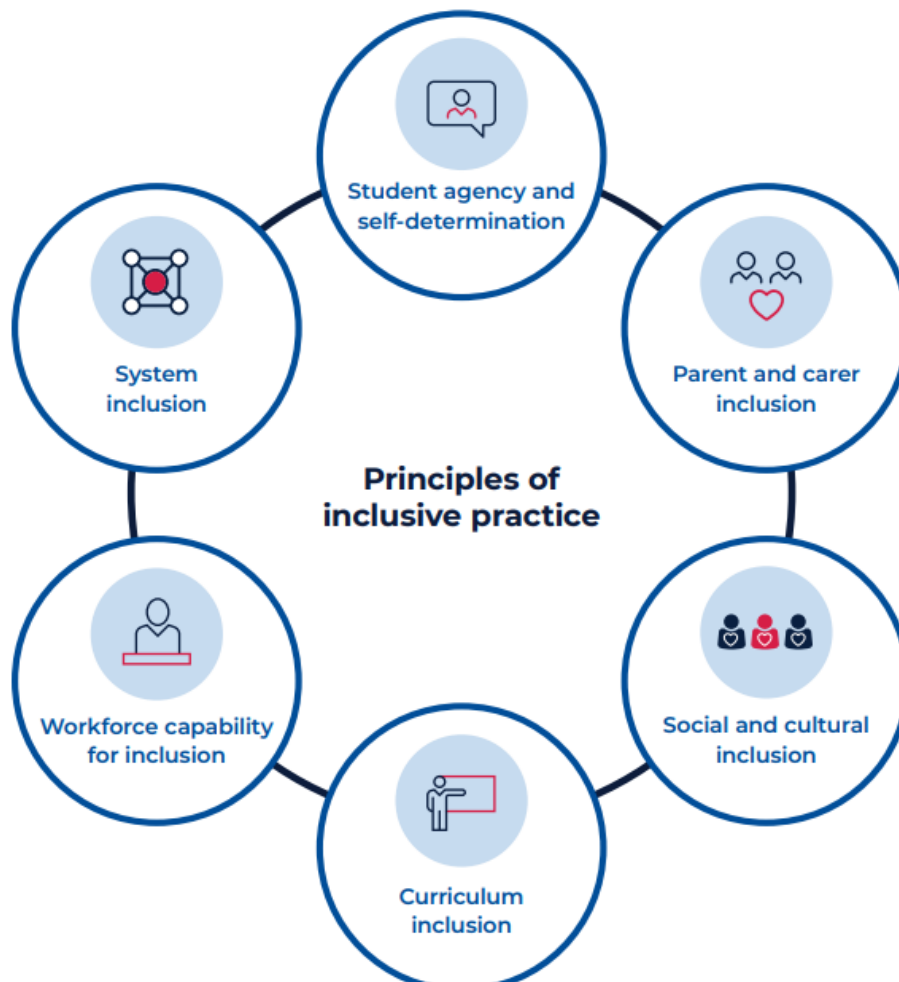
- How do I join?

To join, please complete the google form [here](#)

Please complete the form, even if you emailed Beth last year, so that we can create the 2025 committee list.

- When is the first meeting?

Our first meeting will be held on Wednesday 2nd April from 8.30am—9.30am in the staffroom. Pending your availability, we can supply a link for you to join virtually.



**Congratulations to our 2025 Leadership Team!**

	<b>PREFECTS</b>
Esteban L C	Emilia C
Olivia S C	Jem M
Moses B VC	Chi Rai L
Elise B VC	Bonnie B

<b>HOUSE CAPTAINS</b>	<b>HOUSE VICE CAPTAINS</b>
<b>Banksia</b> Saskia H Daniel H	<b>Banksia</b> Winter T Polly M
<b>Kurrajong</b> Achira B Maple L	<b>Kurrajong</b> Emelia L Huxley W
<b>Wattle</b> Zac S Luca BB	<b>Wattle</b> Banjo W Ryan T
<b>Waratah</b> Eva Yin Grace H	<b>Waratah</b> Casey O Declan PO

<b>CAPA</b>	<b>Library Monitor</b>	<b>School Pride</b>	<b>Environment Officers</b>	<b>Information Technology</b>
Anna C	Felice B	Ethan Mc	Esme C	Uls M
	Tex S	Antu AO	Boy C	Chris F
	Toby H		Jack G	Oliver L
	Jack S			
	Gemma B			
	Olivia A			
	Chelsie N			
	Vera P			
	Anderson C			



## Our School Rules

- Be safe
- Respect yourself, others and the environment
- Cooperate
- Do your best

We follow the School Rules so everyone at school can LEARN, FEEL SAFE and is TREATED WITH RESPECT.

**What will happen if I don't follow the rules in class?**



**1<sup>st</sup> On task reminder** from the class teacher

This can sound like:  
“(Name) you're talking. Listening, thank you.”



**2<sup>nd</sup> Second reminder** from the class teacher to correct my behaviour

This can sound like:  
“Facing this way and listening, (name).”



**3<sup>rd</sup> Teacher directs me to think about my behaviour**

Sit and reflect in an area of the classroom  
Calm down with one of the Assistant Principals



**4<sup>th</sup> Restorative reflection** with the class teacher

(Written or Verbal)

## Restorative Practice

Restorative Practice is a positive approach that works with students, rather than doing things to them or for them. Conflict is an inevitable part of life. How we work to resolve conflict impacts on a school's climate and culture and ultimately on students' social and academic outcomes.

Restorative practice within schools encourages behaviour that is supportive and respectful. It puts the onus on individuals to be truly accountable for their behaviour and to repair any harm caused to others as a result of their actions.

A restorative approach focuses on building, maintaining and restoring positive relationships, particularly when incidents that involve interpersonal conflict or wrongdoing occur.



<p><b>1</b></p> <p>What happened?</p>	<p><b>2</b></p> <p>What were you thinking about at the time?</p>	<p><b>3</b></p> <p>What have your thoughts been since the incident?</p>
<p><b>4</b></p> <p>Who do you think has been affected by your actions? In what way were they affected?</p>	<p><b>5</b></p> <p>What do you need to do now to make things right?</p>	<p><b>Restorative questions</b></p>



# Parent App

Available now!

Download on the App Store or Google Play by clicking the image below.



### Key Features

- Get real time push notifications from your school
- Stay signed in and save your card for secure payments for fees and excursions
- Give consent, sign forms and respond to attendance alerts
- View the school calendar and news



# Help everyone at Petersham stay ALLERGY AWARE

WE KEEP EACH OTHER SAFE THROUGH...

### AWARENESS

Learn the signs of an allergic reaction  
Know what your classmates and friends are allergic to

### AVOIDANCE

Never share food  
Always wash your hands before and after you eat

### ACTION

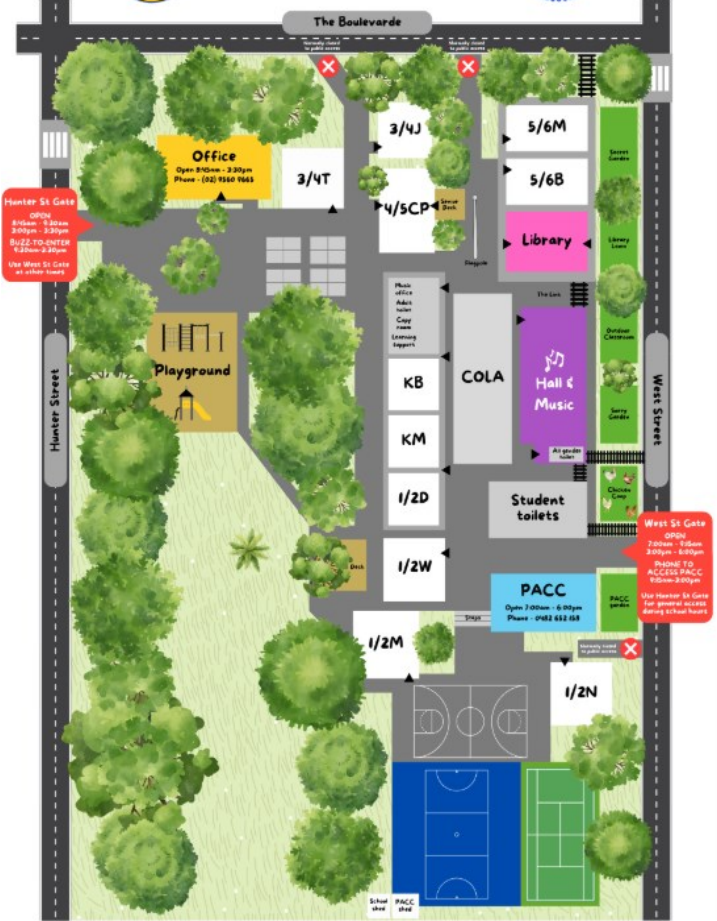
If you're unsure, ask a trusted adult if a food is safe  
Tell a trusted adult if you or someone with allergies feels sick



While we can't guarantee a nutfree environment at school or PACC, we ask:  
**PLEASE DON'T BRING ANY FOODS CONTAINING NUTS**



WELCOME TO PETERSHAM PUBLIC SCHOOL  
*our little community*  
**2025 SCHOOL MAP**



## Why attendance matters

When your child misses school they miss important opportunities to...



Learn



Make friends



Build skills through fun

education.nsw.gov.au



## Days missed = years lost

A day here and there doesn't seem like much, but...

When your child misses just... they miss weeks per year and years over their school life



education.nsw.gov.au



# VISUAL ARTS AND DESIGN SPECIALIST STREAM 2026

## APPLICATIONS NOW OPEN

Are you interested in enrolling your child at Dulwich High School of Visual Arts and Design?

Apply for our Visual Arts and Design Specialist Stream for Year 7 2026.

Applications can be found on our school website, applications close Friday 28 March 2025.

**SAVE THE DATE FOR OUR OPEN NIGHT WEDNESDAY 5 MARCH 2025 5-7PM**



**LEADERS IN CREATIVE EDUCATION**

For more information, contact DHSVAD  
1-9 Seaview Street, Dulwich Hill NSW 2203  
(02) 9560 7299  
<https://dulwich-h.schools.nsw.gov.au/>

@dulwich\_high\_school

Dulwich High School of Visual Arts and Design - Official



# CANTERBURY GIRLS HIGH SCHOOL

## OPEN NIGHT TOURS

Tuesday 4 March 2025

4:00pm - 6:00pm

Bookings **NOT** required



## School-in-Action Tours

Tuesday 11 March 2025

9:30AM - 11:30AM

Bookings **required**



BOOKING WEBSITE

<http://www.schoolinterviews.com.au/>

School-in-Action Tours booking code: **h94yk**



Church Street Canterbury NSW 2193  
Phone 02 9718 1805 Fax 02 9718 3501  
Email [Canterbury-hSchool@det.nsw.edu.au](mailto:Canterbury-hSchool@det.nsw.edu.au)  
Web [www.canterburg-h.schools.nsw.edu.au](http://www.canterburg-h.schools.nsw.edu.au)

# Ashfield Boys High School OPEN NIGHT 2025



We invite you to join us on our Open Night to experience all that Ashfield Boys High School has to offer your son. We extend a special welcome to parents and children in Years 5 and 6.

**Date:** Tuesday 11 March 2025

**Location:** Guests will be welcomed in the Hall

**TOUR BOOKINGS:** Bookings are online at <https://www.trybooking.com/1357917>



117 LIVERPOOL ROAD ASHFIELD  
For further Enquiries: **PHONE** 9798 6620  
**Email:** [ashfieldbo-h.school@det.nsw.edu.au](mailto:ashfieldbo-h.school@det.nsw.edu.au)



# Back to school is a lot.\* Let's get ready.

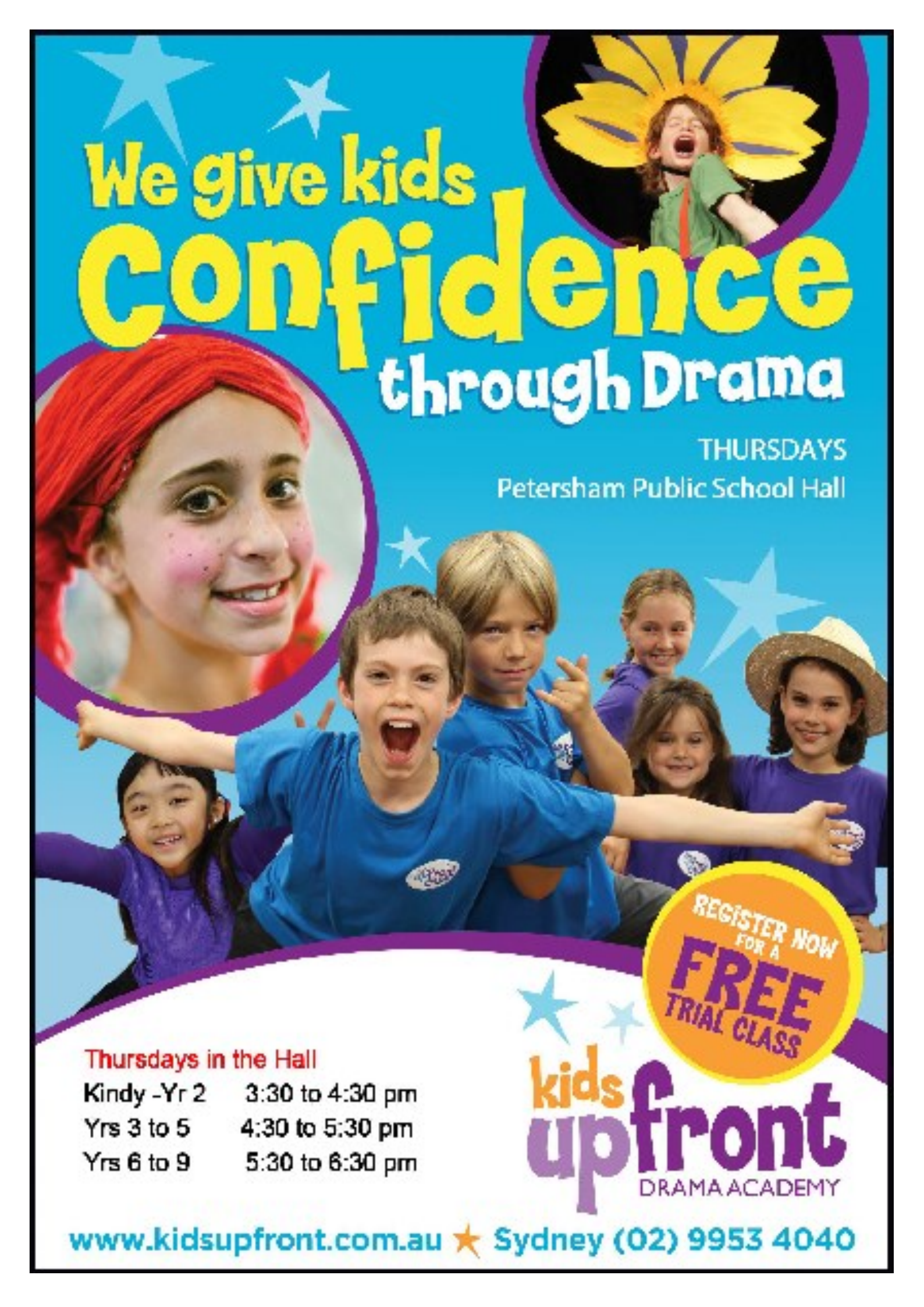
\*A lot of feelings, a lot of expenses, a lot of stress.

## Saver Plus can help.

saverplus







We give kids  
**Confidence**  
through Drama

THURSDAYS

Petersham Public School Hall

REGISTER NOW  
FOR A  
**FREE**  
TRIAL CLASS

Thursdays in the Hall

Kindy -Yr 2     3:30 to 4:30 pm

Yrs 3 to 5     4:30 to 5:30 pm

Yrs 6 to 9     5:30 to 6:30 pm

**kids**  
**upfront**  
DRAMA ACADEMY

[www.kidsupfront.com.au](http://www.kidsupfront.com.au) ★ Sydney (02) 9953 4040



Ian Thorpe Aquatic Centre



**Win FREE  
swimming  
lessons  
for a year!**

**Enrol today**

Scan to learn more





# We're coming to town

Give life. Give blood in Ashfield.

3 to 8 March



**We're popping up at:**

Ashfield Town Hall  
260 Liverpool Rd  
Ashfield NSW 2131  
Open Daily

Book your donation now



☎ 13 14 95

📍 give blood



**REGO OPEN FOR 2025**



👉 Register: [tinyurl.com/2025-Rego](https://tinyurl.com/2025-Rego)

**KICK OFF THE FUN WITH AUSKICK**



**REGO OPEN FOR 2025**



👉 Register: [tinyurl.com/Glebe-Auskick](https://tinyurl.com/Glebe-Auskick)

## Are you an LGBTQ+ Parent?

For Rainbow Families, it's important that children who have LGBTQ+ parents have access to places where they can be comfortable, have a voice in the community and pursue their own path.

Rainbow Families formed its Youth Group in recognition of how important the voices of our young people are, and to create a safe and supportive peer network of other young people who understand.

The Youth Group accommodates younger and older youth:

- **LITTLE RAINBOWS** is open to the younger 9-12 age group, and offers an opportunity for social connection and age appropriate activities.
- **YOUTH GROUP** is designed for 13-17 year olds. They develop projects and initiatives for young people and young adults in the community.

Each group meets twice a month over food and fun activities with our group leader and school teacher, Geoffrey Parry-Faing, in the inner West area.



**Confidence building, friendship, learning. Join us!**

If you're a Rainbow Family and would like to connect with us to find out more about the Youth Group and Little Rainbows, go to: [RainbowFamilies.com.au](https://RainbowFamilies.com.au)

You can also find us on Facebook and Instagram.  
E: [geoffreyp@rainbowfamilies.com.au](mailto:geoffreyp@rainbowfamilies.com.au)



*"I like going to Little Rainbows because it is really fun and we get to do amazing activities. You can just be yourself and you get to meet new friends too!"*  
- Joel